 Children's Health Queensland
Hospital and Health Service - Australia

Integrating the physical, psychological and social care of children through Project ECHO®

Dr Dana Newcomb

Medical Director Integrated Care, Children's Health Queensland

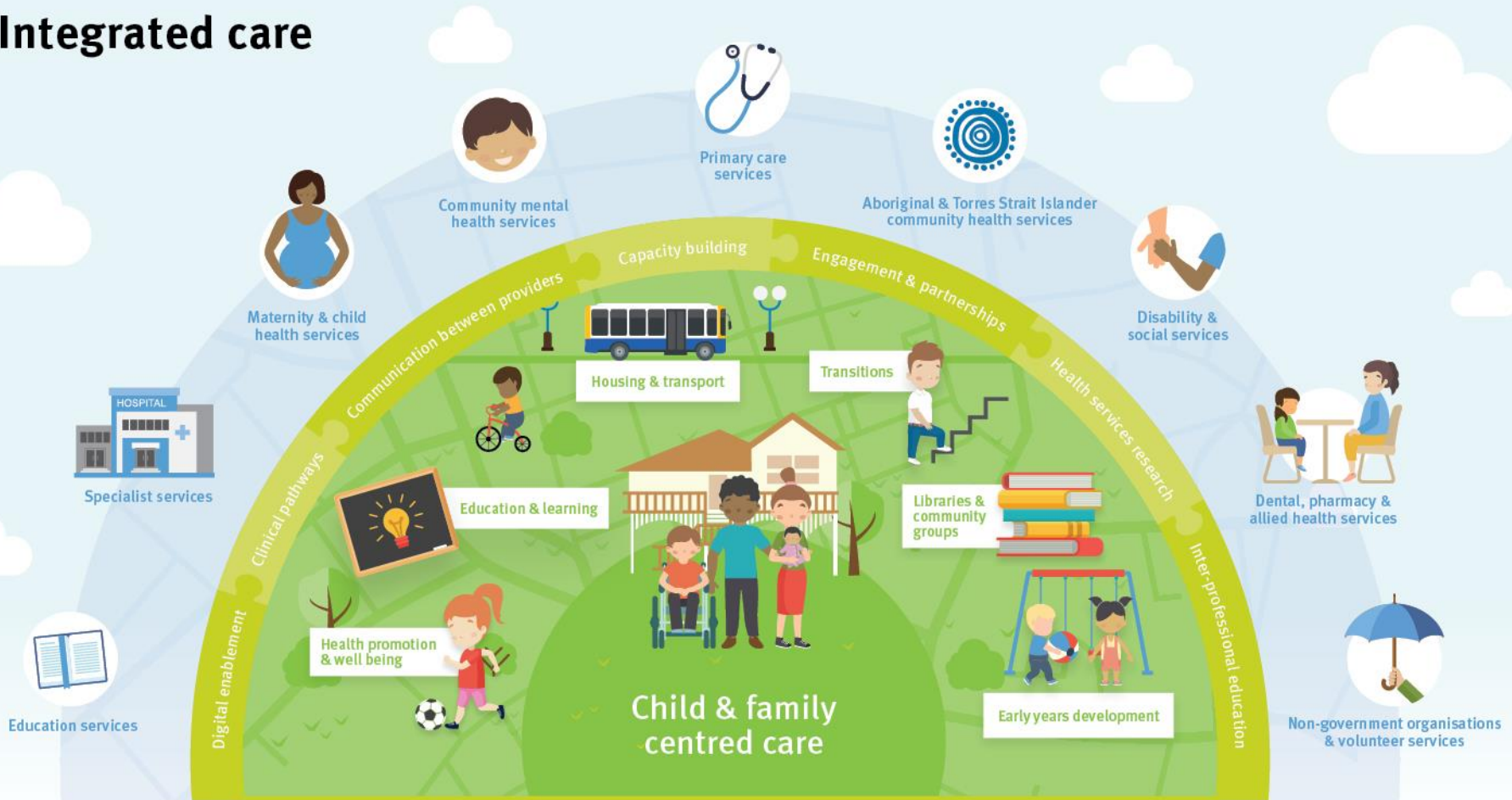
September 2018



Why do we need an integrated approach to care for children and young people?



Integrated care



Foundations of integrated care



Integrated care



Child & family centred



Data & information sharing



Clinical integration



Joint planning & governance



Inter-professional working



Shared values & culture

Foundations of integrated care



What is Project ECHO[®]?

- A hub and spoke model of **interprofessional education** and case-based learning which:
 - uses Zoom videoconference technology
 - is highly collaborative; and
 - learner-centric
- Based on the principle of **All Teach and All Learn**
 - Multidisciplinary panel at 'hub' contribute specialist content expertise
 - Participants at spokes contribute knowledge of local context and cultural considerations



ECHO vs. Telemedicine

TeleECHO™ Clinic



Expert hub team

ECHO supports
community based
primary care teams



Learners at spoke site

Patients reached with specialty
knowledge and expertise



Traditional
Telemedicine



Specialist manages patient remotely



International experience

Project ECHO Hub Locations (Global)



- ECHO[®] is now a worldwide movement to:
- ‘demonopolize’ medical knowledge
- expand access to best practice care for underserved patients.



Children's Health Queensland's ECHO[®] series

Topic	Target audience
ADHD	GPs, psychologists, nurses
Paediatric obesity	Dieticians, nurses, GPs, health workers
Refugee kids	Teachers, principals, guidance officers
Paediatric persistent pain	Paediatricians and allied health teams
Kids' behavioural and mental health	GPs, nurses, health workers
Congenital foot anomalies	Physiotherapists
**Indigenous health	**Health workers, nurses







Acknowledgments

Perrin Moss

perrin.moss@health.qld.gov.au

Robyn Littlewood

Robyn.Littlewood@health.qld.gov.au

Jackie Walker

Jackie.walker@health.qld.gov.au

